



Edinburgh Gate, Harlow, CM20 2GS

Originally designed by Conran converted in 2017-2019 into this luxury flat development. Ideally located 2 minutes from Harlow town station, Harlow town park across the road, Harlow town centre and the Water Gardens only a short walk away.

This one bedroom flat views like new inside with an open plan lounge/diner. Modern High gloss fitted kitchen with integral appliances. Double bedroom with fitted mirror door wardrobes and a stylish modern bathroom. The building enjoys bright and spacious central Atrium, Roof Gardens and Conservatory area. Allocated parking to the rear.

Offers In Excess Of £180,000

Edinburgh Gate, Harlow, CM20 2GS



- Fantastic location.
- Parking Space
- Central Atrium Entrance
- 2 minutes to Harlow Station
- Hi spec looks like new
- Lift Access
- Adajacent to Harlow Town Park
- Roof Gardens

Kitchen Living Area

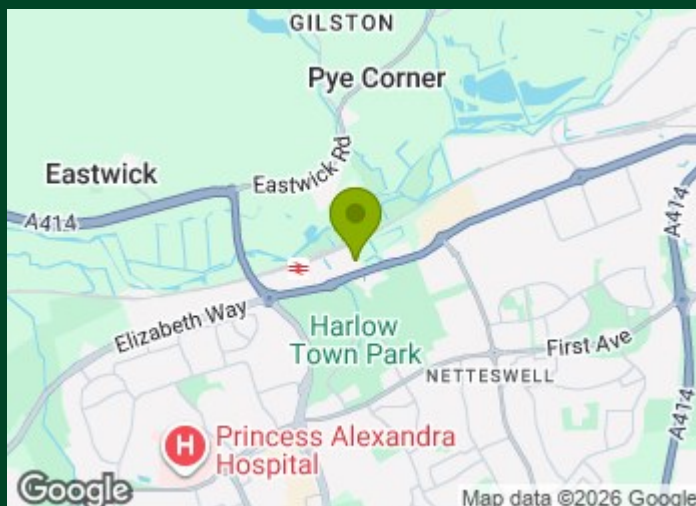
20'11" x 12'6" (6.38m x 3.81m)

Bedroom

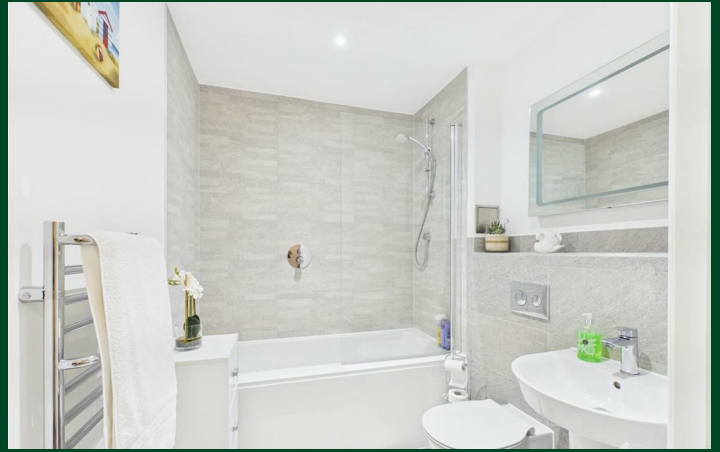
10'10" x 8'11" (3.30m x 2.72m)

Entrance Hall and storage

Bathroom



Directions



Floor Plan



Council Tax Details

Band A

These particulars, whilst believed to be accurate are set out as a general outline only for guidance and do not constitute any part of an offer or contract. Intending purchasers should not rely on them as statements of representation of fact, but must satisfy themselves by inspection or otherwise as to their accuracy. No person in this firm's employment has the authority to make or give any representation or warranty in respect of the property.

